

PROFICIENCY PROFILE TM



Assessment Result for: **Tom Stuka**

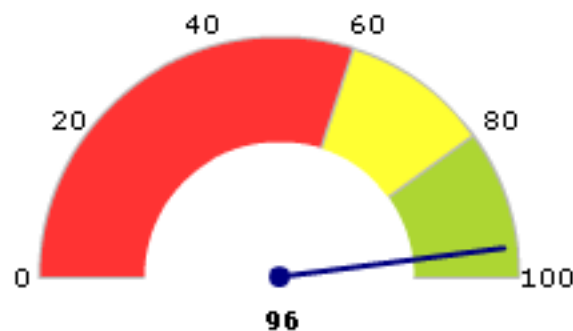
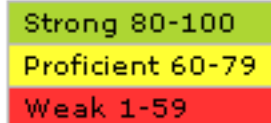
Date: **01/25/2009**

Subject: **MICROSOFT EXCEL 2000 FOR END USERS - Remote**

Client: **Systems Engineering Service Corporation**

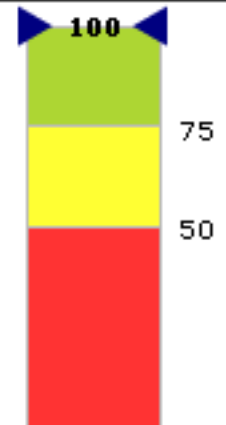
This assessment was self-administered and not taken under supervised conditions.

Score: 96



Tom has achieved an overall score of 96 across all sub-skills in this subject.

Percentile: 100%



Tom has scored higher than 100% of all test takers in this subject.

Subject Analysis:

Sub-Skills	Weak	Proficient	Strong
Using PivotTable and PivotChart	0%	10%	90%
Using Macros	0%	40%	60%
Using Formulas	0%	100%	0%
Worksheet Functions	0%	100%	0%
Organizing Data	0%	100%	0%
Integrating with Other Office 2000 Applications	0%	100%	0%
Entering and Retrieving Data	0%	100%	0%
Publishing and Sharing Worksheets	0%	100%	0%
Excel 2000 User Interface	0%	100%	0%
Managing Workbooks and Worksheets	0%	100%	0%
Formatting a Worksheet	0%	100%	0%
Financial and Statistical Analysis	0%	100%	0%
Charts and Maps	0%	100%	0%

IKM assessments are designed to measure overall proficiency in a subject and depth of knowledge in specific sub-topics. This score report does not provide a criterion-referenced interpretation, pass/fail score or standard of performance. Please note that test results, in isolation, are not pure predictors of success in employment or any given role. Other indicators, such as prior experience, references and interviews, should be considered prior to any employment or business decisions.